

NEWS RELEASE

March 15, 2022

FOR IMMEDIATE RELEASE

Contact: Myra Stoney, Health Director, director@swhealth.ne.gov, 308-345-4223

COVID-19 Update for Southwest Nebraska

- 13 cases of COVID-19 were recorded in Southwest Nebraska Public Health Department (SWNPHD) between March 7 - March 13, 2022. Less than 4% of tests were positive in SWNPHD in the past month. In the past 2 years, over 7300 distinct persons have tested positive at least once in SWNPHD. Almost 80% of all COVID cases detected in the past week were in Keith County.
- 42% of all SWNPHD residents are fully vaccinated. 48% of those who received the minimum recommended dose (1 or 2 doses as indicated) has also received their vaccine boosters.

Weekly report Mar 7 – Mar 13, 2022

Overview

The weekly report will look at COVID-19 cases in SWNPHD across different time periods, presenting graphs showing daily progress of cases and a weekly summary in conclusion

- The first table describes total COVID positive cases detected from **Mar 7 – Mar 13** (1 week) and **Feb 14 – Mar 13** (4 weeks) in Chase, Dundy, Hayes, Hitchcock, Frontier, Furnas, Keith, Perkins, and Red Willow counties. Positive results are described as weekly and monthly **COVID cases/10,000 population**.
- The second table describes all COVID tests conducted in SWNPHD from **Mar 7 – Mar 13** (1 week) and **Feb 14 – Mar 13** (4 weeks). We describe **total tests, positive cases and test positivity rate** by age and gender.
- The third table shows the **proportion of persons fully vaccinated** in SWNPHD. We define “fully vaccinated” as the proportion of persons who have received the minimum recommended dose (2 for Pfizer & Moderna; 1 for Janssen vaccines). Data is described by **county and age** category. Data current as of **Mar 13, 2022**.
- The first graph looks at the weekly progress of the pandemic from **April 1, 2020 – Mar 13, 2022** across all 9 counties in SWNPHD. We describe the **daily COVID positive case rate (7-day rolling average¹)** across SWNPHD.
- The second graph describes the **average daily case rate (7-day rolling) by age** from **April 1, 2020 – Mar 13, 2022**, dividing the population by **10-year age categories**.
- The third set of graphs describe the **average daily case rate (7-day rolling) April 1, 2020 – Mar 13, 2022** in each of the 9 counties in SWNPHD, described as **per 10,000 residents**.

¹ 7-day rolling average refers to the sum of the cases reported on that day and the preceding 6 days divided by 7. This number is presented for each day to ‘smooth out’ the line for cases.

The table below describes COVID positives/10,000 population and the positivity rate for the **past week (Mar 7 – Mar 13, 2022)** & the past 4 weeks (**Feb 14 – Mar 13, 2022**)

	Total Population	Mar 7 – Mar 13 (1 week)		Feb 14 – Mar 13 (4 weeks).	
		Positive cases/10,000 population	Test Positivity rate	Positive cases/10,000 population	Test Positivity rate
Chase	3,734	0.0	0.0%	121	5.4
Dundy	2,023	0.0	0.0%	188	14.8
Frontier	2,609	0.0	0.0%	68	15.3
Furnas	4,786	2.1	1.7%	239	43.9
Hayes	943	0.0	0.0%	33	42.4
Hitchcock	2,843	0.0	0.0%	344	42.2
Keith	8,099	12.3	6.4%	616	54.3
Perkins	2,907	3.4	5.6%	103	10.3
Red Willow	10,806	0.9	1.9%	730	48.1
TOTAL	38,750	3.4	3.6%	2,442	37.4

The table below describes COVID tests conducted, positives and the positivity rate by age and gender for the **past week (Mar 7 – Mar 13, 2022)** & the past 4 weeks (**Feb 14 – Mar 13, 2022**)

Age (in yrs)	Mar 7 – Mar 13 (1 week)			Feb 14 – Mar 13 (4 weeks).		
	Tests	Positive cases	Test Positivity rate	Tests	Positive cases	Test Positivity rate
0-17	18	0	0.0%	188	15	8.0%
18-29	62	0	0.0%	346	21	6.1%
30-39	38	2	5.3%	245	17	6.9%
40-49	46	0	0.0%	336	19	5.7%
50-59	54	2	3.7%	341	17	5.0%
60-69	58	2	3.4%	343	20	5.8%
70-79	28	3	10.7%	218	12	5.5%
80-89	55	4	7.3%	425	24	5.6%
Total	359	13	3.6%	2,442	145	5.9%
Gender						
Female	260	8	3.1%	1,759	83	4.7%
Male	93	5	5.4%	655	58	8.9%
Data missing/ not disclosed	6	0	0.0%	28	4	14.3%
Total	359	13	3.6%	2,442	145	5.9%

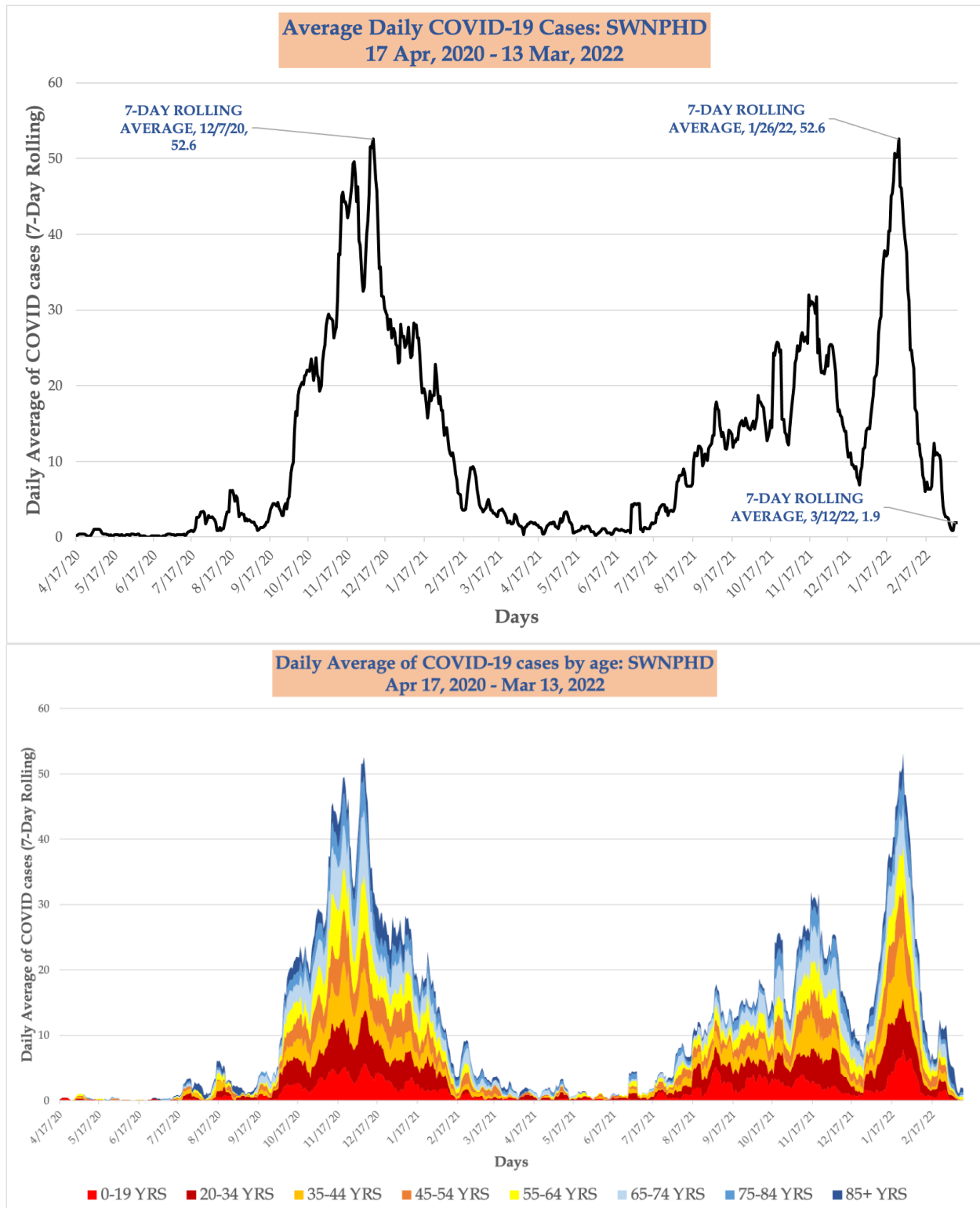
Details of vaccination rates by age in each of the nine counties in Southwest Nebraska Public Health Department is shown below. The legend for color codes used is also displayed. Percentages have been rounded off to the nearest whole number. Vaccines are currently available to all eligible residents aged 5 years and over.

Only 1st (Janssen) & 2nd doses (Moderna & Johnson & Johnson) have been considered, booster doses have not been counted to calculate the “completely vaccinated” rate. Date spans the period from 15 Dec, 2020 – 13 Mar, 2022.

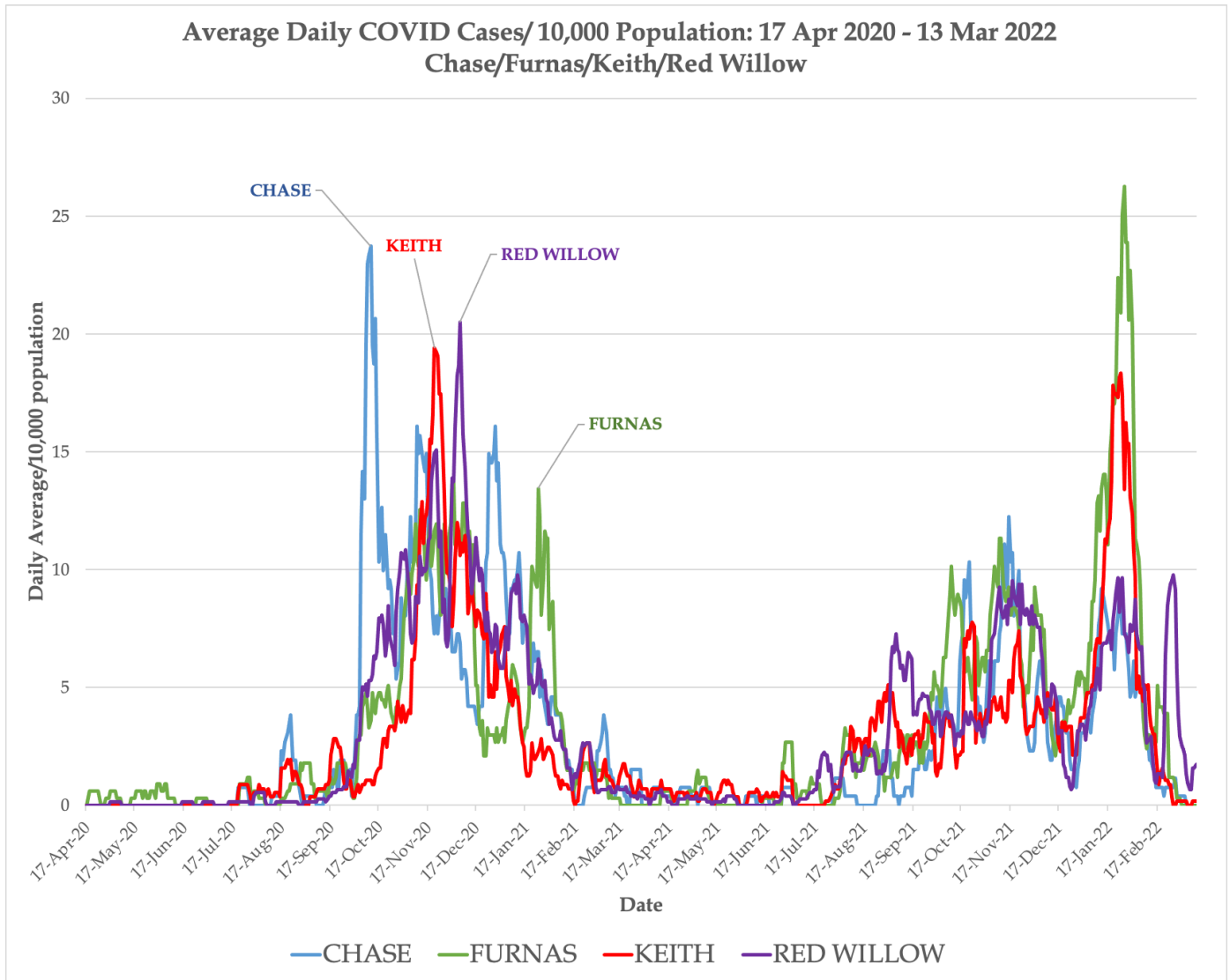
	0-19 YRS	20-34 YRS	35-44 YRS	45-54 YRS	55-64 YRS	65-74 YRS	75-84 YRS	85+ YRS	ALL AGES
Chase	11%	34%	38%	47%	50%	83%	74%	65%	43%
Dundy	7%	22%	22%	33%	41%	66%	100%	41%	31%
Frontier	7%	31%	37%	43%	50%	62%	54%	100%	37%
Furnas	15%	41%	48%	49%	61%	83%	91%	78%	50%
Hayes	8%	23%	33%	20%	30%	74%	48%	50%	29%
Hitchcock	6%	22%	34%	33%	47%	77%	51%	64%	35%
Keith	14%	37%	44%	43%	61%	64%	67%	86%	45%
Perkins	10%	30%	41%	45%	52%	72%	81%	56%	41%
Red Willow	11%	34%	45%	44%	59%	93%	68%	87%	44%
SWNPHD	11%	33%	41%	43%	55%	76%	69%	75%	42%

0% - 24%	Less than 1/4th received 1 or 2 dose as recommended
25% - 49%	1/4ths to 1/2 received 1 or 2 dose as recommended
50%- 74%	1/2 to 3/4ths received 1 or 2 dose as recommended
75% & higher	Over 3/4ths received 1 or 2 dose as recommended

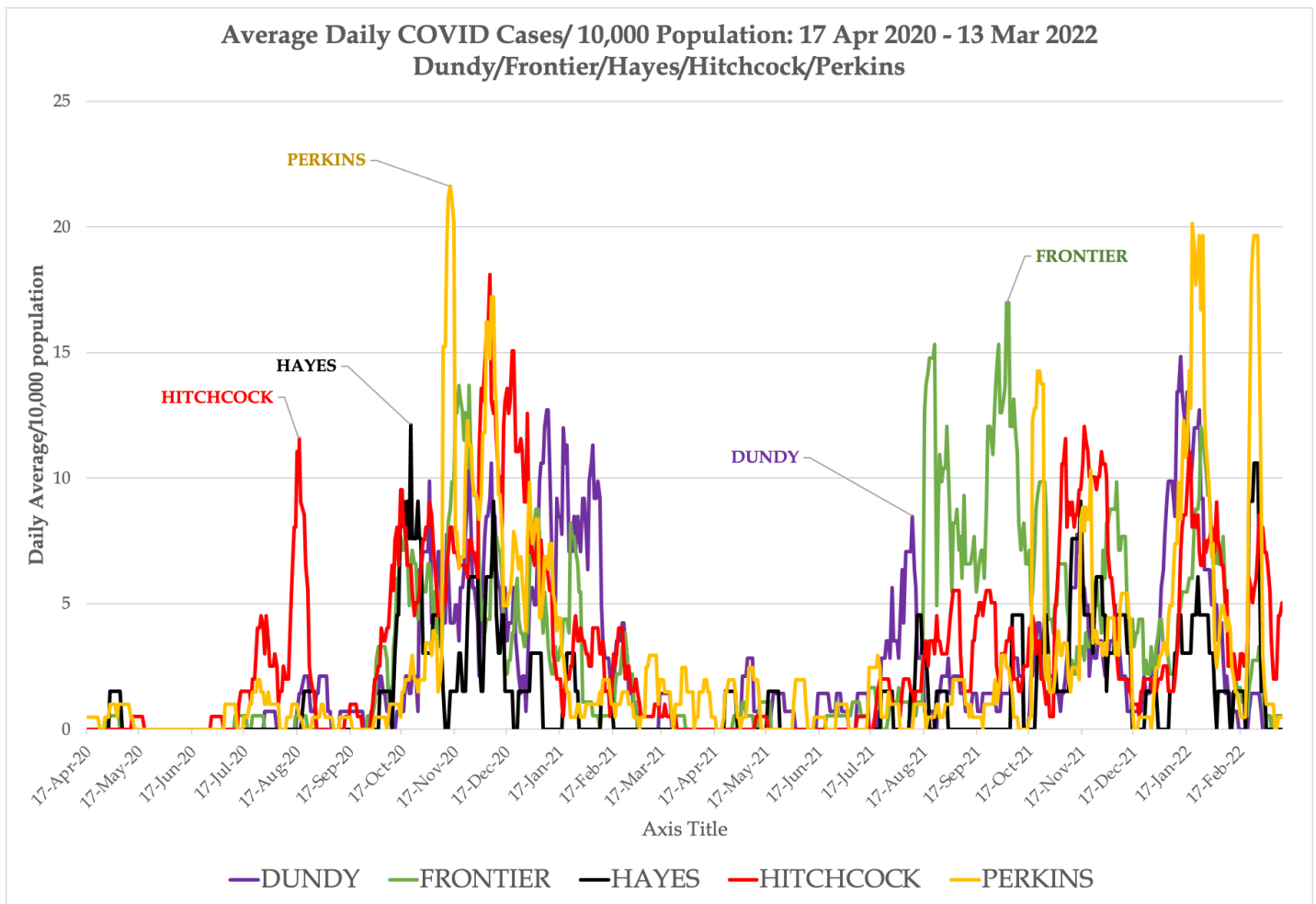
- The first graph below describes the **average daily number of new cases** across all 9 counties of Southwest Nebraska Public Health Department from 5 May 2020 – 13 March 2022. Daily average is depicted by the 7-day rolling average of cases. The second graph describes the daily average of cases by age. The width of the graph represents the average number of new COVID cases for the previous 7-days, and the individual colors describe the ages.
- In general, blue = 65+ years, Yellow & Orange = 35-64 year olds, Red = Less than 35 year olds.



- The graph below describes the **average daily number of new cases/ 10,000 population in Chase, Keith, Red Willow, and Furnas counties** from 5 May 2020 – 13 March 2022. The height of the graph corresponds to the average number of new COVID cases proportional to the population of the county.



- The graph below describes the **average daily number of new cases/ 10,000 population in Hitchcock, Hayes, Perkins, Dundy, and Frontier counties** from 5 May 2020 – 13 March 2022. The height of the graph corresponds to the average number of new COVID cases proportional to the population of the county.



SWNPHD is located at 404 West 10th St (1 block north of Arby’s) in McCook and can be reached by calling 308-345-4223. The website www.swhealth.ne.gov contains many resources and additional information helpful to prevent disease, promote and protect health. You can also follow SWNPHD on Facebook and Instagram. SWNPHD serves Chase, Dundy, Frontier, Furnas, Hayes, Hitchcock, Keith, Perkins, and Red Willow counties.

###